

DESK AND DERRICK DATELINE



Golf Tournament



June, 2022
Volume 71, Issue 6

INSIDE THIS ISSUE

Board of Directors	2
President's Letter Nichole Harney	3
ADDC President's Letter Philana Thompson	4
Central Region Jamie Sabata	5
April Meeting Recap	6-7
Alex Mills	8-9
Club News	10-12
Seminar	13
June Meeting	14
MSU Centennial Celebration Article	15-17

We did it!





Club Purpose

The purpose of the club shall be to promote the education and professional development of individuals employed in or affiliated with the petroleum, energy, and allied industries and to educate the general public about these industries.

Club Motto

Greater Knowledge - Greater Service

Official Colors

Black and Gold

2022 Board of Directors

President - Nichole Harney
Vice President - Sheila McGaughey
Secretary - Lauren Martin
Treasurer - Jordan Moss

1 Year Director - Jordan Campagna Jackson
2 Year Director - Vickie Young
Immediate Past President - Diana Walker
Parliamentarian - Rena Shaffer

Letter from the Editor

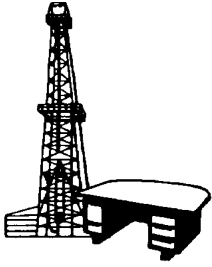
Wow! It's been a busy spring. We are coming off of BOTH the region meeting and the golf tournament and I'm sure everyone is exhausted. Take a breath and think about all that we've accomplished as a club though.

We did it! Thankfully it'll be a long time until we have to host both events back to back again, but wasn't it fun, though? The excitement. The adrenaline. The people. I know I loved it all.

Please thank the golf committee for their hard work. They are a big part of why our club gets to support education. Without their dedication in raising the funds, we would just be a group that gets together once a month for lunch. We wouldn't be impacting our community at the same time.

What's next for our club? A bit of a break! I think our next big thing is the Industry Appreciation Luncheon in October so be on the watch for ways that you can assist with that. As we've learned the past couple of months - many hands make for light work.

Jordan Campagna Jackson



Association of
Desk & Derrick
Clubs

**Desk and Derrick
Club of Wichita Falls**

2022 Board

Nichole Harney

President
716-5100

Sheila McGaughey

Vice President
716-5340

Lauren Martin

Secretary
723-5585

Jordan Moss

Treasurer
781-8008

Jordan Jackson

One Year Director
716-5100

Vickie Young

Two Year Director
716-5100

Diana Walker

Immediate Past
President
716-5344

Rena Shaffer

Parliamentarian
234-3307

June 2022

I hope that all the Mother's had a blessed Mother's Day last month. I would like to wish all the Father's a happy Father's Day in the coming weeks. Happy Summer to everyone!

I want to give a big shout out to the Golf Tournament Committee. They had an amazing turn out with 27 teams. There was so much positive feed back from all the players. Thank you to everyone who helped with this year's tournament. Jordan Jackson has posted pictures from the golf tournament on our Facebook page. So don't forget to check out all the fun that everyone was having.

June 17 is the deadline for the ADDC 2023 Officer Nominations. The form can be found on the ADDC website and should be sent to Terry Ligon at (terryligon@hotmail.com). If you need assistance, please let me know.

Sheila McGaughey and the Education Committee have planned a Seminar that will be coming up later this month. Monday, June 27, at 5:30 pm, we will learn about Estate Planning and Protective Arrangements presented by Ben Hoover and Grant Rogers with Hoover Rogers. This seminar will be open to guests so reach out to your friends and family. Everyone needs to be prepared for what life will bring us in the future. Please see more information in this bulletin.

Dr. Price with Midwestern State University of Texas has presented the club the four Desk and Derrick Scholarships of 2022. They are Sherilene Morancie, Jamy Keaffer, Jordan Swearingen, and Patrick Boston.

Our June membership meeting speaker will be Terry Caves, VP Land, with Gun Oil Company whose topic will be "Greater Force" Force Majeure – Pandemic, Prices, and Production. Please contact Diana Walker at (DWalker@sjoc.net) to make your reservation to join us for this interesting program. Hope to see you all at The Forum on June 15.

I hope everyone has a wonderful summer and safe vacations. Enjoy your time with the kiddos while they are out of school.

Nichole Harney



Board of Directors

PRESIDENT
Philana Thompson
Merrion Oil & Gas Corporation

PRESIDENT ELECT
Barbara Pappas
Cobra Oil & Gas Corp.

SECRETARY
Wendy Sparks
Carl E Gungoll Exploration LLC

TREASURER
Heather Woods
Souder, Miller & Assoc.

IMMEDIATE PAST
PRESIDENT
Evelyn Green
GBC Minerals, Ltd

PARLIAMENTARIAN
Nell Lindenmeyer
A-Plus Well Service, Inc

CENTRAL REGION
DIRECTOR
Jamie Sabata
Gardner Cryogenics/Air
Products

NORTHEAST REGION
DIRECTOR
Samuel Thomas

SOUTHEAST REGION
DIRECTOR
Kathy Martin
Acadian Ambulance Service,
Inc

WEST REGION DIRECTOR
Ingrid Burton

Philana Thompson
2022 ADDC President
610 Reilly Ave, Farmington, NM 87401
505-486-1171
pthompson@merrion.bz

June 2022

Happy June!

Over the last couple of years, it seems our organization has been hit with some pretty hefty fines when it comes to copyright infringement of photo's.

In copyright law, there are a lot of different types of works, including paintings, photographs, illustrations, musical compositions, sound recordings, computer programs, books, poems, blog posts, movies, architectural works, plays, and so much more!

An example of the issue at hand is folks are copying pictures found on the internet and using them in newsletters, social media, etc. Unless you have purchased the copyright license or received direct approval from the owner this is copyright infringement and can be subject to hefty fines.

Is it possible to use a copyright-protected work without infringing?

Yes, in some circumstances, it is possible to use a copyright-protected work without infringing the owner's copyright. For more about this, you may wish to learn about fair use. It is important to note that your content can be removed in response to a claim of copyright infringement, even if you have...

- Given credit to the copyright owner
- Refrained from monetizing the infringing content
- Charged for a copy of the content in question
- Noticed similar content that appear elsewhere on the internet
- Purchased the content including a hard or digital copy
- Recorded the content yourself from TV, a movie theater, or the radio
- Copied the content yourself from a textbook, a movie poster or photograph
- Stated that "no copyright infringement is intended"

<https://support.google.com/legal/answer/3463239?hl=en>

The best rule of thumb is to only use photos you have received direct permission to use or have purchased the license to use it. It is in your clubs' best interest to go back through your social media platforms, newsletters and anything that has been posted on a public platform and verify the content won't get you in trouble with copyright infringement laws.

Prayers and Blessings!

Philana Thompson

pthompson@merrion.bz



Board of Directors

PRESIDENT

Philana Thompson

Merrion Oil & Gas Corporation

PRESIDENT ELECT

Barbara Pappas

Cobra Oil & Gas Corp.

SECRETARY

Wendy Sparks

Carl E Gungoll Exploration LLC

TREASURER

Heather Woods

Souder, Miller & Assoc.

IMMEDIATE PAST

PRESIDENT

Evelyn Green

GBC Minerals, Ltd

PARLIAMENTARIAN

Nell Lindenmeyer

A-Plus Well Service, Inc

CENTRAL REGION

DIRECTOR

Jamie Sabata

Gardner Cryogenics/Air
Products

NORTHEAST REGION

DIRECTOR

Samuel Thomas

SOUTHEAST REGION

DIRECTOR

Kathy Martin

Acadian Ambulance Service,
Inc

WEST REGION DIRECTOR

Ingrid Burton

Jamie Sabata

2022 Central Region Director

1621 N. Cain Ave

Liberal, KS 67901

Cell# 620-655-6503

jamie.sabata@gmail.com

June 2022

Hello Central Region members,

Summer has arrived! Yay!! Some of us are planning fun activities as in field trips, golf tournaments, cookouts and family vacations! If your club has any field trips or any activities planned, please email the info to all the Central Region Club Presidents and post to the Central Region Facebook page. That way everyone is aware of the events and could possibly attend. 😊

Important info and dates to remember:

- Copyright Infringement – please read Philana’s June President letter....it has all the important info that must be followed on any social media to prevent any hefty fines. This is a must read before posting pictures, etc on your club’s and Central Region Facebook pages, or sharing club newsletters and bulletins on a public platform.
- Proposed Central Region Bylaws Vote – Club votes due by July 1.
- 2023 ADDC Association Officers Nominations – due June 17. Submit to: Terry Ligon (terryligon@hotmail.com)
- Distinguished Member or Special Achievement Award nominations – due by July 1 @ 6PM MST. Submit forms to: Helen Trujillo (htrujillo@rlbayless.com)
- 2022 ADDC Convention – September 21-25, 2022
- TAXE1 and 990 Forms were due by May 15. If you haven’t already, please send your confirmation and filing to Shelly Hildebrant (shellyhildebrant@hotmail.com) and copy me as well.

Have a safe, blessed and fun June!

Love, Light & Blessings,

Jamie Sabata

Fracturing NOT Fracking

By Lauren Barrientos

I am incredibly thankful for the time and effort our speaker contributed to our club on May 18th. We had the pleasure of hearing from Kevin Armstrong, a Completions Consultant who has been in the industry for 42 years. Aside from being the greatest Dad in the world, his abundance of knowledge and his passion to learn is something I have always looked up to in him. His career began with Dowell Schlumberger and grew immensely over the years. Growing up in the oilfield industry gave my family the opportunity to experience lots of new places, including various towns in Texas, Oklahoma, Aberdeen, Scotland and Anchorage, Alaska. When I joined Desk & Derrick and jumped into the program committee, I knew I needed to have Dad come and speak to our group. He's had experience with cementing, wireline, hydraulic fracturing, acidizing, and management, just to name a few.

He began by explaining that hydraulic fracturing is a well-stimulation technique commonly used in low permeability rocks such as tight sandstone and shale to increase oil and gas flow to a well from petroleum-bearing rock formations. There are several steps in the process to ensure maximum production- selecting a fracturing fluid, a proppant, determine maximum allowable treatment, select a fracture propagation model, treatment size, perform production forecast analysis, and perform NPV analysis.

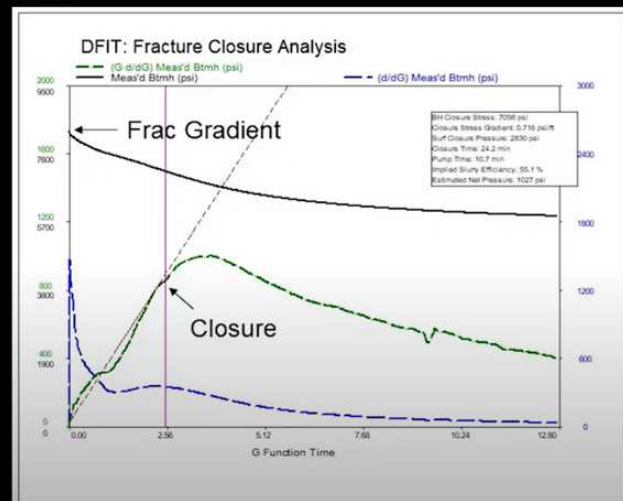
The logic behind fracturing is very simple- we can't see down hole, right? How can we get more out? While fracturing was found to be successful for extracting petroleum liquids, fracturing as we know it today wasn't developed until the 1990s, when George P. Mitchell combined existing fracturing technology with horizontal drilling to access oil-rich shale deposits thousands of feet underground. Shale fracking has been a more recent discovery-it used to be thought of as a sort of border or cap and was discovered to be rich with oil/gas. So began the "Shale Boom."

DFIT analysis is a diagnostic fracture injection test. This test is used to estimate important fracture and reservoir parameters. DFIT will provide data about fracture gradient, closure stress, leak off type- presence of natural fractures, reservoir pressure and permeability.

Imagine as a young child trying to take a rock and break it apart. It does not break in a straight or even line. The break occurs in the least principal stresses in the rock, or the weakest portion of the rock. Fracturing is designed to place a break in the rock to get the fluids moving. The porosity of the rock is the total amount of void space, which could be filled with oil/gas. Permeability is defined as the ability of fluids to pass through the rock. Proppant is a sand mixture used to keep the rock from coming back together and allowing the rock to be 1,000 times more permeable, creating an open highway for the fluids to flow.

In closing- Special thanks to my awesome Dad for the lesson. I know there is still so much more to learn about the industry and I'm very grateful to our speakers for their time and knowledge!

Step 1: Estimate Frac Gradient and Closure Stress (G-Function Analysis after Nolte et al and Barree et al.)





U.S. Oil Producers "In No Need to Control Retail Gas Prices"

By Alex Mills

The price of gasoline reached record highs this week, and some politicians, including the President of the United States, began pointing fingers at U.S. oil producers.

But what these critics fail to explain is the petroleum industry – from the well head to the gas tank – is a mixture of thousands of companies from coast-to-coast each segment providing different services to deliver a much needed product to consumers.

Two economists –Garrett Golding and Lutz Killian, both with the Federal Reserve Bank of Dallas – authored a study this week explaining some of the reasons oil producers in the U.S. should not be criticized for higher gasoline prices.

"Independent oil and gas companies—those without refining assets—are responsible for 83 percent of U.S. oil production and about half of the oil consumed in this country," Golding and Killian wrote. "Oil is sold in competitive markets at prices reflecting global supply and demand. It is refined into gasoline, diesel and other fuels whose prices are similarly set in competitive markets.

"Fuels are then sent to more than 400 U.S. distribution facilities, from which they are sold and delivered to retailers and end users at another price depending on local conditions," they stated.

"Gas station operators set retail prices based on their expected acquisition cost for the next delivery of fuel from the local distributor, federal and state tax rates, and a markup that covers operating expenses, such as rent, delivery charges and credit card fees.

"Since only 1 percent of service stations in the U.S. are owned by companies that also produce oil, U.S. oil producers are in no position to control retail gasoline prices," Golding and Killian stated.

Many petroleum products – such as crude oil, gasoline, diesel and jet fuels – are traded daily on the international markets. Crude oil is the basic commodity to make other petroleum products and the price of each commodity often follows oil prices.

Even though the U.S. is the largest oil producing nation, some policymakers believe the industry should produce more oil. But rising service prices, shortages of experienced labor, lack of capital, and increased regulation by the federal government prevent development of reserves.

The report concluded by asking: "Apart from the difficulties of expanding domestic oil production, what are the odds of higher U.S. oil production growth materially lowering the prices of crude oil and gasoline?"

Even under the most optimistic view, U.S. production increases would likely add only a few hundred thousand barrels per day above current forecasts. This amounts to a proverbial drop in the bucket in the 100-million-barrel-per-day global oil market, especially relative to a looming reduction in Russian oil exports due to war-related sanctions that could easily reach 3 million barrels per day.

"Placing the responsibility to lower retail gasoline prices on shale oil producers is thus unlikely to work, and additional regulation of oil producers is unlikely to lower pump prices."

-30-

Alex Mills is the former President of the Texas Alliance of Energy Producers

Memorial Day Gasoline Prices Highest Since 2012, Near Record Levels

By Alex Mills

The price of petroleum products hit near record levels this week as demand remains strong and supplies struggle to keep pace.

The Energy Information Administration (EIA) reports the U.S. average retail price of regular gasoline was \$4.59 per gallon on May 23, the highest inflation-adjusted (real) price since 2012 and the fourth-highest price on record.

"The high price of gasoline is currently driven by several factors, including the price of crude oil, the effects of Russia's full-scale invasion of Ukraine, and U.S. gasoline demand growth outpacing refinery runs, resulting in large gasoline inventory draws," EIA stated.

Stocks of petroleum products are down. Crude oil stocks are at 219 million barrels down 64 million barrels from last year, gasoline stocks are at 214 million barrels down 12 million barrels, and distillate stocks are at 106 million barrels down 22 million barrels.

Crude oil prices closed at \$110 per barrel on May 25. Gasoline prices in Texas averaged \$4.258 per gallon, according to AAA. North Texas averaged \$4.072, West Central Texas averaged \$4.153 and East Texas averaged \$4.22.

The price of crude oil, the largest component of the price of gasoline, has been rising for two years since hitting a low of \$19 per barrel on April 21, 2020, as petroleum demand increased faster than production, EIA stated.

"At the time of Russia's full-scale invasion of Ukraine, global petroleum supply and demand balances were already relatively tight, limiting the market's ability to absorb the potential loss of Russia's crude oil volumes (including volumes lost due to sanctions)," EIA said. Crude oil has increased \$17 since Feb. 23, the day of the invasion.

Demand for gasoline in the United States (measured as product supplied) increased from a low of 5.9 million barrels per day (b/d) in April 2020, early in the COVID-19 pandemic, to 8.6 million b/d in February 2022, the latest monthly data available, according to EIA.

Gross inputs into U.S. refineries fell to 13.3 million b/d in April 2020, down from 16.7 million b/d in April 2019, EIA said. With the exception of a major winter storm in February 2021 that forced many Gulf Coast refiners to shut down, gross inputs into refineries have generally increased since 2020 to meet rising demand for petroleum products, including gasoline.

Refinery utilization is at the top of the five-year range, indicating that refineries may be running closer to maximum capacity utilization than gross inputs alone would indicate, EIA stated.

"This combination of high crude oil prices and low or falling gasoline inventories is contributing to the high retail gasoline prices heading into Memorial Day weekend," EIA stated. "AAA forecasts that despite the high gasoline prices, 34.9 million people will travel 50 miles or more from home this Memorial Day, down 7% from 2019 levels but up 5% from 2021 levels." natural gas is up as are the earnings of petroleum companies.



2022

SUNDAY	MONDAY	TUESDAY	WEDNESDAY	THURSDAY	FRIDAY	SATURDAY
29	30	31	1	2	3	4
5	6	7 Board Meeting	8	9 RSVP Deadline	10	11
12	13	14 Flag Day	15 Membership Meeting	16	17	18
19 Father's Day Juneteenth	20	21 First Day of Summer	22	23	24	25
26	27 Jessica Cain	28	29	30	1	2

IMOM - © 2022 by Family First. All Rights Reserved.

2022 Convention & Conference

September 21 - September 25, 2022 in Pittsburg, PA

We hope as many of you as possible make the trek to Pittsburg for our 2022 convention!



2022

SUNDAY	MONDAY	TUESDAY	WEDNESDAY	THURSDAY	FRIDAY	SATURDAY
26	27	28	29	30	1	2 Nelva White
3	4 Independence Day	5 Board Meeting	6	7 Paige Baumer	8	9 Annaliese Hancock
10	11	12	13	14 RSVP Deadline	15	16
17	18	19	20 Membership Meeting	21	22	23
24	25	26	27 Casie Mass	28	29	30
31						

AMGM | © 2022 by Family First. All Rights Reserved.

Congratulations!

Hope Shatto, daughter of member Barbara Pappas, was on the President's List for the past semester. The requirements were a 4.0 GPA and 12 or more hours.

Plainview Campus and WBUonline
President's List: Hope Shatto



SEMINAR

Time: Monday, June 27th
5:30 pm

Place: 711 Indiana
(They're remodeling, subject to change)

Deadline for reservations:
June 23—12:00 noon

smcgaughey@sjoc.net / 940-716-5340
OPEN TO GUESTS

IT'S NEVER TOO EARLY TO GET YOUR AFFAIRS IN ORDER

Having children or experiencing a serious health scare are among the top reasons people start estate planning. But it's wise to get your affairs in order before you are in a situation where you may not be able to voice them.

Estate planning includes the establishment of legal documents such as wills, power of attorney, health care directives, living trusts, privacy authorization, executor designation, kid protection plans, and more. A major goal of estate planning is to protect the assets you want to leave to your loved ones before being drained by *taxes* or *creditors*.

Estate plans can address:

- ◆ Instructions to care for your kids
- ◆ Terms for health care
- ◆ Power of attorney authorization
- ◆ Document release (HIPPA is often addressed here)
- ◆ Instructions for your funeral
- ◆ Organ donation
- ◆ Transfer on death designations

Protective arrangements like:

- ◆ Lifetime Asset Protection Trusts
- ◆ Marital Trusts
- ◆ Tax Protection Trusts
- ◆ Beneficiary designations

UNDERSTANDING THE LATEST IN ESTATE PLANNING, WEALTH PROTECTION, TRUSTS, AND MORE.

Presented by:

Ben Hoover and Grant Rogers



HOOVER
ROGERS

**Desk and Derrick Club of Wichita Falls
Membership Meeting**

June 15, 2022

The Forum, 2120 Speedway Avenue

Presiding: Nichole Harney
Cobra Oil & Gas Corp.

Invocation: Ashley Pierce
Burk Royalty Co.

Introduction of Guests: Jennifer Rodriguez
Burk Royalty Co.

Introduction of Speaker: Lauren Barrientos
Stephens Engineering

Program: Terry Caves
Gunn Oil Company, VP Land

“Greater Force”

Force Majeure—Pandemic, Prices and Production

Reservations should be emailed to Diana Walker

Email: dwalker@sjoc.net

or call/text Cell: 940-636-0971 or Office: 940-716-5344

Reservations Deadline: 4:00 pm—June 9th

Cost \$19.00

RESERVATIONS MUST BE MADE

If you make a reservation and do not attend, you are still responsible for payment.

(If paying by cash, please bring exact change)

MSU Texas—Dillard College of Business Administration

MSU Centennial Celebration 1938-1955

April 21, 2022



The Dillard College of Business Administration hosted the next MSU Centennial Celebration on April 21st. It was their way of recognizing a few of the companies that helped build Wichita Falls and MSU Texas. Rena Shaffer and myself attended and it was another very fascinating event filled with stories of the past.

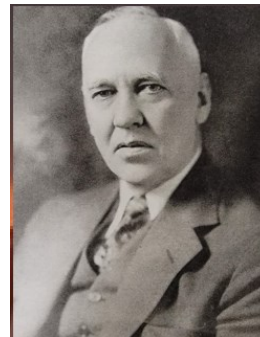
Here is a list of the Wichita Falls companies founded 1938—1955:

- | | |
|------------------------------|------------------------------------|
| 1938 Pioneer Restaurants | 1951 Dual Drilling |
| 1940 Prothro Company | 1951 Santa Rosa Communications |
| 1941 Sheppard Air Force Base | 1952 Texoma Community Credit Union |
| 1943 Hamilton Bryan | 1954 Work Services Corporation |
| 1948 Bolin Oil Company | 1955 Town and Country Homes |
| 1949 Wichita Clutch | |

1940 Perkins Prothro Company

Presented by Joe Prothro

Perkins Prothro Company was formed in 1940 by J.J. Perkins and his son-in-law Charles Prothro. The presenter was Joe Prothro, son and grandson to these two men. Their primary business was ranching and commercial real estate. They became very interested in developing downtown Wichita Falls, some of their developments were the Sears Building, Texas Electric, North Texas Savings and Loan, the Woolworth Building, Perkins Timberland and Max Kreutz House of Music.



J.J. Perkins, 1874-1960



Charles Prothro 1918-2001

Some of their oil and gas ventures were located in Cooke and Clay County, Texas.

One example that he gave us was the Jameson Strawn Sand—it was the largest oil production in the area with 150 producing wells drilled without a dry hole. Perkins Prothro owned the majority of the working interest in this area and another owner was the Zapata Oil Company located in Midland. He told us that there were many meetings held in Wichita Falls with Perkins Prothro and the CEO of the Zapata Oil Company, who was none other than the former President of the United States, George H.W. Bush.

He also told us that some of their investments included oil and gas production, oil and gas refining, energy, coal mining, real estate, railroads, retailing and banking investments.

In 1925, Frank Kell, Joseph Kemp and J. J. Perkins founded the Wichita Falls Southern Railroad to run coal from New Castle to Wichita Falls.

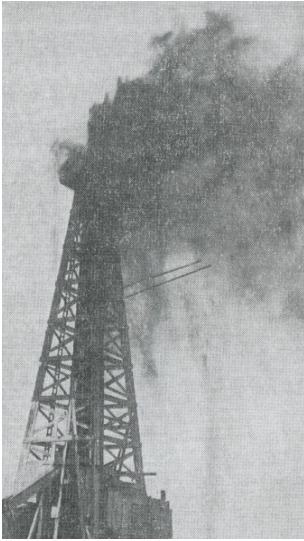


The City National bank Building as it appeared just after completion in 1920.

1948 Bolin Oil Company

Presented by Dan Bolin

Mr. Bolin started his presentation by telling us that it all began with the Chalk Hill field in Archer County discovered by Bob Lindsay and D.H. Bolin, owners of the Deep Oil Development Company.



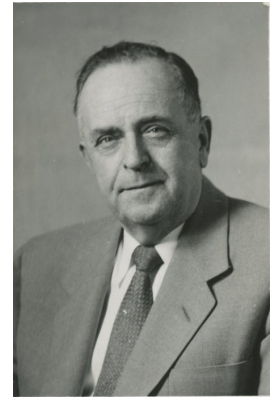
The picture to the left shows the remarkable virility of the field with the Wilson No. 1 showering petroleum hitting the crown block from a 10-inch pipe when the well was brought in March 23, 1931. This well produced approximately 750 to 800 BPD.

Bolin Oil Company was founded in 1951 by D. Houston Bolin and his three sons, D. Phil Bolin, Robert Bolin and Charles William Bolin.

Warren T. Ayes was the accountant for the company during this time.

In 1976, D. Phil Bolin, Pat S. Bolin and Warren T. Ayres broke away from Bolin Oil and founded a partnership that ultimately became Eagle Oil & Gas Co. which is still in operation today.

The Bolin family have been very supportive of MSU-Texas with donations to The Robert L. Bolin Graduate School of Geology and the Fain Fine Arts Department. Through the generosity of D. Phil and Aurora S. Bolin they presented the Bolin Fountain and Liberty Bell to the MSU-Texas campus. A quote from Aurora S. Bolin: *"We must all continue our generosity and gratitude to MSU for their tremendous educational contributions throughout our community"*.



Daniel Houston Bolin

Deep Oil Development Co.
Bolin & Lindsay
Wilson Estate #1 well—Archer Co.



1949—Wichita Clutch

Wichita Clutch is a designer and manufacturer of heavy-duty clutches and breaks for industrial process equipment. In 1949, Mr. Wilson, owner of Wilson Manufacturing, started Wichita Clutch as a sole supplier of clutches for their line of drilling and service rigs. They were incorporated in 1954.

Today, Wichita Clutch is a subsidiary of Altra Industrial Motion. They are a 2 billion dollar company that is headquartered in Boston, Massachusetts with sales and manufacturing all over the world.

They have companies in England, Germany, Spain, Sweden, Denmark, Brazil, China and Russia.

They produce clutches and brakes for the major markets such as mining, oil and gas, industrial

and marine. When they first started, oil and gas was their primary market, now mining is 40% of the market. Some of their products include: hydraulic clutches and brakes, air clutches, air brakes, water cooled clutches and brakes, and fluid couplings—all for industrial use.



1951—Dual Drilling

Presented by David Wolverton

Robert Priddy was the chairman and CEO of Dual Drilling, a land and offshore drilling company he co-founded in 1951. Dual Drilling is the company created that grew into the legacy of The Priddy Foundation. After World War II, Mr. Priddy moved back to Wichita Falls and went to work for Industrial Supply Company for about 7 years. He founded Dual Drilling in 1951 and had rigs that went as far as Indonesia. In 1980, at the peak of the oil boom, Priddy sold Dual Drilling to the Bechtel Group and, soon after, assumed sole control of the foundation.



Ruby and Robert Priddy

After selling to the Bechtel Group, he turned all his interests into philanthropy and his beloved ranch in Clay County. The Priddy Foundation also sponsored The Ruby and Robert Priddy Pavilion - Midwestern State University-Texas located at The Wichita Falls Museum of Art in 2015.

Mr. Priddy continued his personal business pursuits while leading the foundation and working with his brothers to carry on the family's charitable giving through The Priddy Foundation. He, and wife Ruby, began making substantial gifts to the foundation and it was during this time that the foundation's impact in Wichita Falls philanthropy grew significantly. Today the foundation is about a \$300 million foundation and is considered to be the 20th largest foundation in Texas. The Priddy Foundation Scholars Program at MSU –Texas provides scholarship for first generation students, in addition to supporting students throughout their four years of education at Midwestern State University-Texas. Opportunities for "The Priddy Scholars" include student success workshops, career planning assistance and study abroad. The Priddy Foundation is a vital community asset, impacting the lives of thousands across north Texas. Mr. Wolverton concluded his presentation stating that "the foundation primarily stands for higher education and that through the higher education Dual Drilling definitely lives on".



(Above: Old Newspaper clipping—date unknown)

Sidenote: One of my co-workers at Stephens Engineering, Denise Henderson (former D & D member), recalls some of her remembrances while working for Dual Drilling. She remembers being able to attend the christening of an offshore rig in Louisiana. Dr. Morris Chapman, First Baptist Church pastor, blessed the rig and Mr. Priddy's secretary, Laura, dropped the rope with a bottle of champagne on the end.

She also remembers how kind Mr. Priddy was to everyone that he met and that it was a great place to work

New Rig: Nathan M. Avery, left, chairman of Galveston-Houston Co., and Robert T. Priddy, chairman of Dual Drilling Co., had reason to smile at the christening Friday of a new rig built by Galveston-Houston for Dual. Rig christenings, once almost a daily occurrence in the Houston area, are now rare; industry representatives at the christening said they couldn't remember one in three years.

